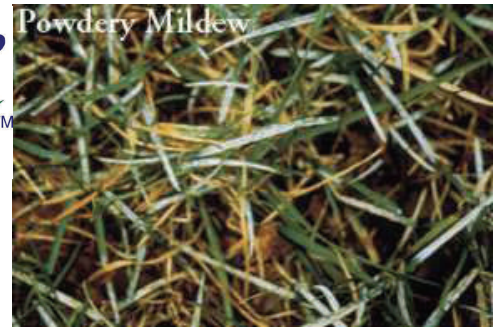


# Living Water

## Lawn & Tree Care



### SULFUR Fact Sheet

Elemental Sulfur is NATURAL and is essential in the Inland Northwest due to the composition of our soils. Sulfur helps balance the pH level in the soil. It really is nature's fungus control. There are actually several benefits to our turf grasses brought on by the maintenance of sulfur levels.

- It is Nature's fungus control.
- It works with nitrogen to produce new protein for plant growth
- It plays an important role in the utilization of oxygen by the plant
- It influences the level of activity of soil microorganisms

Sulfur is a natural fungicide, and enhances the lawn's ability to resist fungi, such as snow mold and powdery mildew along with other turf diseases. It is not a cure all, but works as a preventative to help strengthen YOUR lawn's immunity.

Sulfur compounds in our soils fluctuate from year to year and season to season based on many factors including the soil composition (clays retain more than sands), and the amount of water applied. Since it is so warm in the Inland NW, watering is a major factor in "flushing" the sulfur from our soils. Both Nitrogen and Sulfur are essential in producing the best looking, healthiest and greenest lawns.

Lawns that are colored with a yellow tinge usually need elemental sulfur. Elemental sulfur should be applied sparingly in the fall. Too much elemental sulfur can give the soil a black color.

**Give us a call at 1-800-LAWNCARE if you have any questions**